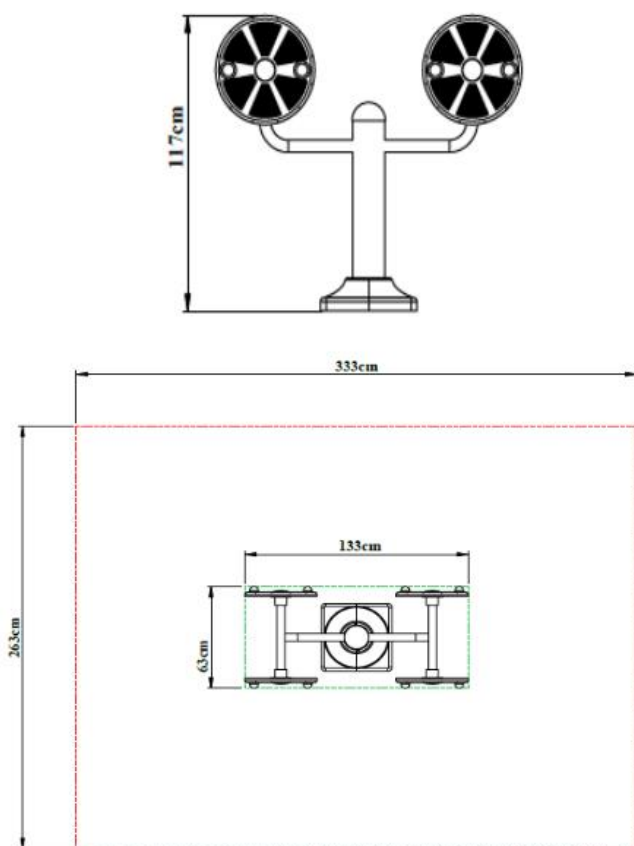


PD-06

Disabled Wrist Run

- Carrier pipes are manufactured from SDM pipes with a wall thickness of at least Ø 139 mm and 2.5-3 mm.
- The moving parts connected to the main body are manufactured with a wall thickness of at least Ø 60 mm and 2.5-3 mm and in one piece with a special twist.
- The main body flashes are manufactured by laser cutting from ST37 sheet with a thickness of 8 mm and a size of 280x280 mm and 4 pieces of flag sheet are welded in order to increase the flange strength.
- The upper part of the carrier main body is closed with a pipe cover made of polyethylene material by injection method.
- Anchor covers measuring Ø139 mm in accordance with the design to fully grasp the carrier pipes are used to close the open-ended pipes in fitness products.
- Anchor covers are produced from polyethylene plastic material by LLDPE (Linear Low Density Polyethylene) injection method.
- Resistant to UV lights and will not harm the user.
- It is manufactured as a double wall and its installation is provided with a screwing system.
- The exerciser has been produced to work the arm, wrist, shoulder and back muscles in a coordinated manner.
- It is designed to work and stretch the joints and muscles and to move the nerves in the shoulders. There are two stations for two people to use comfortably.
- People will be able to do their exercises individually.
- 2 pieces of 6205 2 RS type bearings are used in each movable hub.
- Connection pipes are manufactured from Ø 60 mm pipes twisted to give an aesthetic appearance.
- Lever turning discs are manufactured from polyethylene material in a robust and aesthetic structure.
- There is a spinning top on its movable surface, which will facilitate handling, and circular reliefs on its entire surface.



| | | |
|-------------------|--------|--------|
| Dimensions | Width | 63 cm |
| | Length | 133 cm |
| | Height | 117 cm |